

NOTICE OF STUDY SESSION

For Abilene City Commission
 4 p.m. Monday, March 18, 2019
Wastewater Treatment Plant
1014 2100 Avenue, Abilene, Kansas

TO: Abilene City Commission
FROM: Austin Gilley, City Manager

PURPOSE

The City Commission’s Study Sessions are for the purpose of providing the Commission the opportunity to study items in more detail. The City Manager is responsible for the meeting and helping manage discussion.

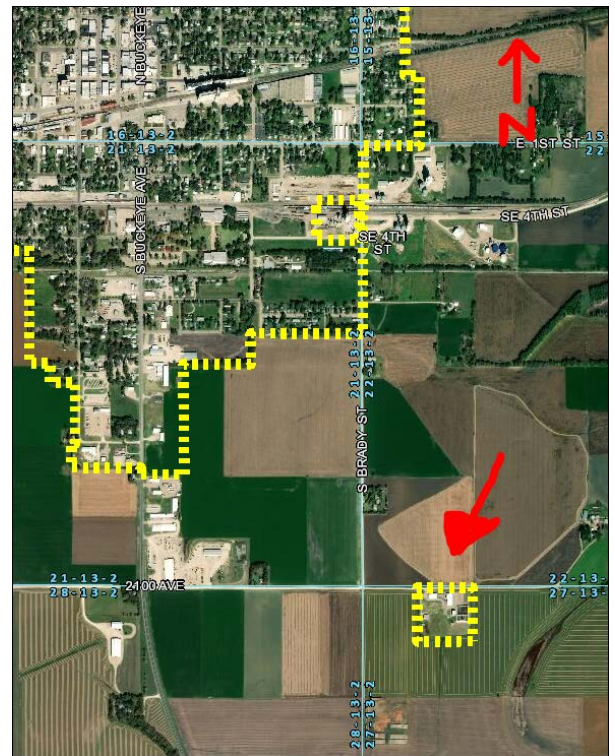
OPEN FORUM

This item will be removed for this tour. ~~This is an opportunity to bring up items to be informally addressed.~~

STUDY ITEMS

IDEA	SUPPORT	STUDY	WRITING	VOTE	EXECUTE	EVALUATE
------	---------	--------------	---------	------	---------	----------

- Continuing our tour schedule, we will meet at the Wastewater Treatment Plant at 1014 2100 Ave. Public Works Director Lon Schrader and Lead Operator G.D. Hite will guide our tour. Similar to the tour of the Water Treatment Plant, time will be provided to ask questions at your leisure. Be prepared for a few tall step climbs, some catwalks, and a noxious odor (with cooler temperatures and some lucky wind, the odor may not be too bad). If we have a large participation audience, we will try to tour in small groups. Keep in mind that in early April we will be reviewing utility rates again – it is our hope these tours will help provide context for the operational and budget implications of staff review and recommendations. To get to the plant: Take Buckeye/K-15 south to 2100 Ave. Turn left/east on 2100, just past S. Brady is the plant. See map here. There should be plenty of parking spaces.



END###

